

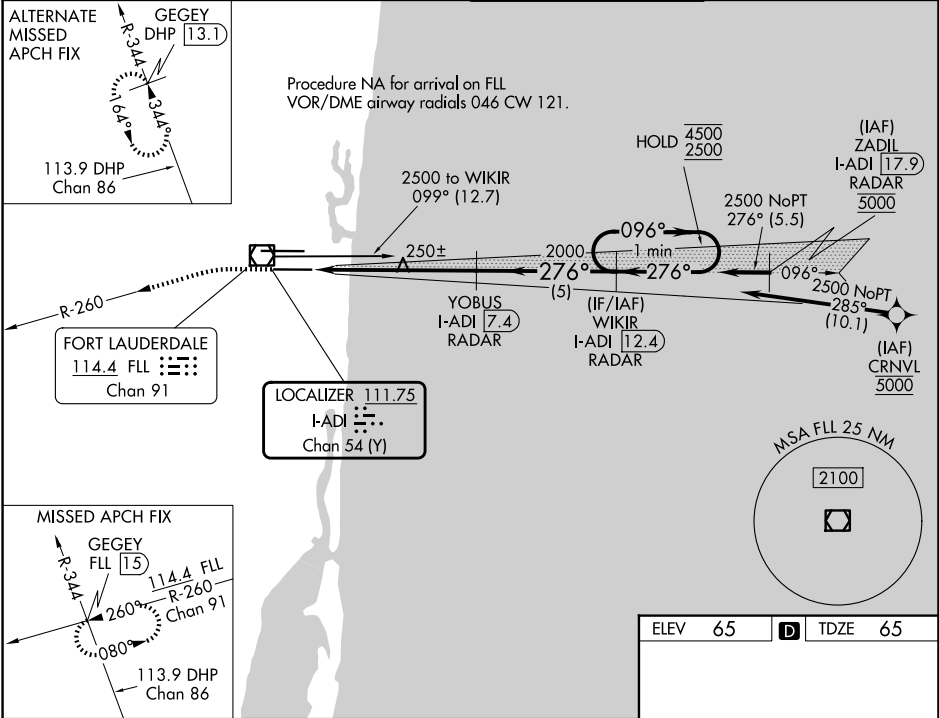
LOC/DME I-ADI <b>111.75</b> Chan <b>54</b> (Y)	APP CRS <b>276°</b>	Rwy Ldg TDZE Apt Elev <b>8000</b> <b>65</b> <b>65</b>
--	------------------------	--

ILS or LOC RWY 28L

FORT LAUDERDALE/HOLLYWOOD INTL (FLL)

DME or RADAR required. RNP APCH-GPS. From CRNVL. RADAR required for procedure entry at ZADIL.	MALSF	MISSED APPROACH: Climb to 1000 then climbing left turn to 3000 on FLL VOR/DME R-260 to GEGEY INT/FLL 15 DME and hold.
Inop table does not apply to S-ILS-28L. Simultaneous approach authorized.		

D-ATIS <b>135.0</b>	MIAMI APP CON <b>133.775 285.6</b>	FORT LAUDERDALE TOWER <b>119.3 257.8</b>	GND CON <b>121.4</b>
------------------------	---------------------------------------	---	-------------------------



1000	3000	FLL R-260	GEGEY INT	VGSI and ILS glidepath not coincident (VGSI Angle 3.00/TCH 69).	WIKIR I-ADI 12.4 RADAR	One Minute Holding Pattern
CATEGORY	A	B	C	D		
S-ILS 28L	265/40		200 (200-¾)			
S-LOC 28L	500/40	435 (500-¾)	500/50	435 (500-1)		
CIRCLING	680-1	615 (700-1)	800-2	800-2¼		
HRL Rwy 10L-28R and 10R-28L						
FAF to MAP 5.9 NM						
Knots	60	90	120	150	180	
Min:Sec	5:54	3:56	2:57	2:22	1:58	

ILS or LOC RWY 28L